

Rapid Magazine's Spring '09 Issue

Review of the NRS Rapid Rescuer PFD



NRS Rapid Rescuer

Whether you use the generous pockets for your iPod and Powerbars on your local after work river run, or fill 'em with a GPS and throw rope for a remote expedition, this rescue vest is equipped for any situation. Plentiful attachment points and integrated quick release belt round out the sturdy Rescuer.

\$200
nrsweb.com

Run of the River

A Rapid GUIDE TO BOATS and GEAR



INTRO SPRAYDECKS

SEALS SHOCKER
We've paddled in the Shocker on class II to III waters without ever having an explosion and, years later, it's still keeping us dry. A Swallow nose guard around the rim, 2.0-millimeter neoprene throughout and glued, stitched and sealed seams make this suit excellent value for the money.
\$190 US
www.nrs.com



PRO SPRAYDECKS

SNAPORAGON ARMORTEX esp REINFORCED
Designed for the most savage hair landing you can conceive of, the deck is made of a single piece of Kevlar for maximum strength. Even after a floating in a steep hole, the shock loads require a zipper gasket keeps your foot dry and close the lateral from landing around your torso like PJs in dryland shoes.
\$450 Can/US
www.trigodsports.com



HARMONY RIVER PASSAGE
Durable, nylon/berglass blades with reinforced tips and an alloy shaft are built to take the rock-battering, low-trace-of-the-bottom abuse of novice paddlers. You'll also appreciate the affordable price tag when you see your first paddle in floating markets.
\$85 US/Can
www.harmonygear.com

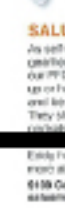
PADDLES

AQUA-BOUND EDGE
Ubiquitous at paddling schools throughout the country for its unbeatable price versus weight and durability. Even with a full 20 x 44-centimeter blade and tough T-1000 handle, the fiberglass Edge weighs less than 600 grams. A curved track offers an aggressive catch while remaining stable and butter-ice.
\$85 Can/US one-piece, \$135 Can/US two-piece
www.aquabound.com



WERNER SHERPA CARBON
We love the Sherpa's versatile end-use blades for both river running and playing. The carbon blades catch cleanly, look easy and are smooth and powerful through the entire stroke. The featherweight carbon shaft is available bent or straight with your choice of blade offset. Like most, the Sherpa is tough.
\$199 Can/US
www.werner.com

ECHO PADDLES PURSUIT
Crafted in Interoak, Quebec, by canoe instructor and fine arts master Andy Carver's, Echo Paddles' lovingly constructed wood and carbon creations can be found in the hands of a growing number of discerning river running canoeists. Fiberglass, Dural and aluminum protect locally harvested hardwood and softwood for paddles that are not only beautiful, but also tough-proof.
\$279 Can/US wood, \$299 Can/US carbon/wood, \$449 Can/US full carbon
www.eshopaddles.com



SALUS EDDY
As self-inflating paddlers and gearheads, we're pretty particular about our PFDs. They should fit without rubbing up on your body, they should be easy to get on and take off. They should also have lots of attachment points for a helmet, throw rope, etc.
Only 1.6 liter liter and more at a great price.
\$139 Can/US
www.salus.com

PFDs



NRS RAPID RESCUER
Well, if you use the generous pockets for your iPod and Powerbars on your local after work river run, or fill 'em with a GPS and throw rope for a remote expedition, this rescue vest is equipped for any situation. Plentiful attachment points and integrated quick release belt round out the sturdy Rescuer.
\$200 US
www.nrs.com